

technical data type **CLX**

Housing : glass reinforced polyester,
compression moulded

Diffuser : injected prismatic diffuser available in PC

Impact strength data of the diffuser :
diffuser in PC : > 6.00 Nm

Reflector : white metal gear tray

Clips : 2-part stainless steel clips

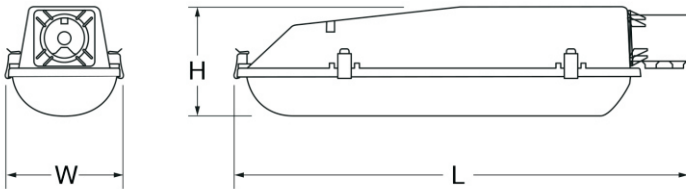
Sealing : poured gasket



Sources:

- Compact fluorescent: 1/2x36w, 1x40w, 1x55w

Optional: Nema socket for photocell



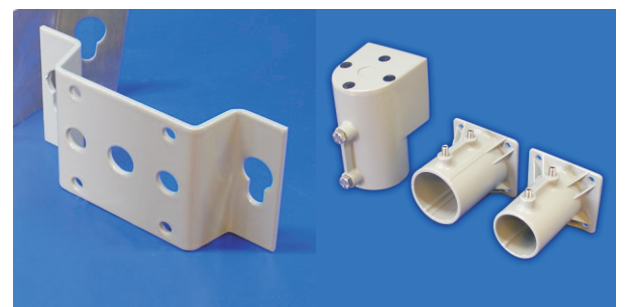
Dimensions (mm)

Mounting mode	L	W	H
Pole top	775	181	168
Side entry	760	181	168
Wall	670	181	168
Corner	765	181	168



Side-entry
(dia 42 upto 60) mm)

Hinged diffuser and
removable geartray



Wall mounting bracket

Pole-top, side entry
bracket



V 27.01.2014



technical data type CLX

