



technical data type LILI LED

LILI, the LI near LIghting:

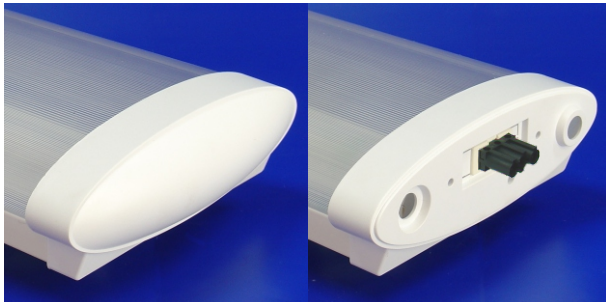
- The fitting consists of a white metal back plate, a white metal gear tray, a plastic extruded frosted diffuser and standard white plastic injected endcaps.
- The cover guarantees an efficient direct/indirect light.
- The plastic diffuser is snap-in mounted on the metal backplate and is easy removable without any tool.
Material : PMMA (frosted)
- **Optional** :- Convex endcap
 - In-line version Midcap (not for small !)
 - Version for LED tubes is also possible.



Electrical specifications:

- Individual or "in-line" luminaires (max 16A).
- 3000, 4000 K with CRI of min. 80
- 80.000h L80 B50 at Ta.max
- MacAdam 3 SDCM

- **Optional** :- DALI driver
- MOTION DETECTOR
- EMERGENCY Module



Option: Convex Endcap
(PS high impact)
(IP 40)

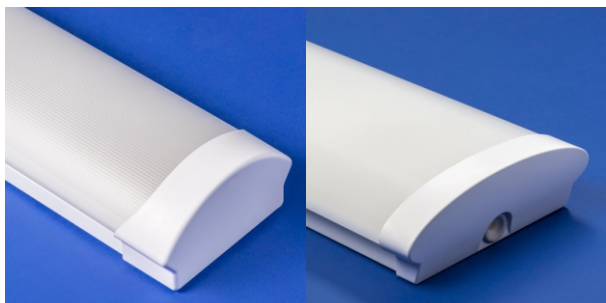
"Midcap" for in-line
assembly (only for WIDE)
(IP 40)

SMALL:

Length	Power*	Flux**	Ta.max
630	12 W	1300 lm	35°C
630	20 W	2500 lm	27°C
1200	18 W	2600 lm	35°C
1200	36 W	5400 lm	27°C
1500	47 W	6900 lm	35°C
1500	58 W	8200 lm	27°C

WIDE:

Length	Power*	Flux**	Ta.max
1200	25 W	3640 lm	35°C
1200	31 W	4300 lm	30°C
1200	36 W	5010 lm	27°C
1500	30 W	4380 lm	35°C
1500	41 W	5700 lm	30°C
1500	47 W	6570 lm	27°C

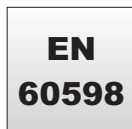


SMALL

WIDE



Easy access
(no tools necessary)



31.07.2023

* Total power consumption of LED's and driver.

** Luminous flux of fitting @ 25°C for 840
(correction factor 0.95 for 830)

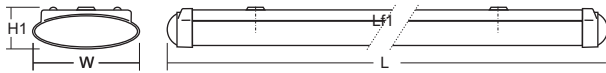
Luminous output and electrical load
have an initial tolerance of
+/- 10 % from nominal.



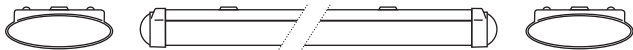
technical data type LILI LED

LILi LED SMALL	L	W	H1	Lf1	Lf3	Kg
630	630	110	60	498	-	1,5
1200	1210	110	60	800	710	2,1
1500	1500	110	60	1000	910	3,0

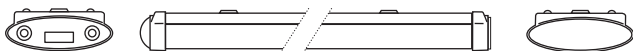
LILi LED WIDE	L	W	H1	Lf1	Lf3	Kg
1200	1293	208	77	800	710	4,0
1500	1550	208	77	1000	910	4,4



LiLi



LiLi Mid-End



LiLi Mid-Mid

